

# Stopper Valves



**Model Name**  
 PRVT120 (Under 12.7mm)  
 PMVT780 (Under 22.2mm)  
 PMVT980 (Under 28.58mm)

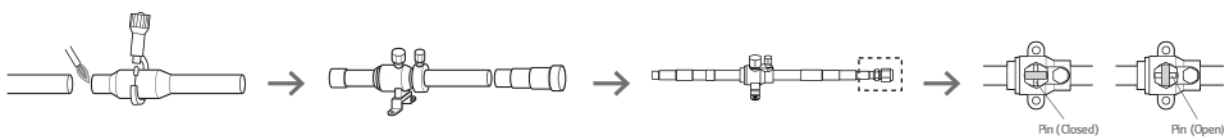
**Key Features**

- This unit can be applied for the additional indoor unit's installation.
- This unit can be applied for each indoor unit's service.

## Specification

Model	Specification
PRVT120	
PRVT780	
PRVT980	

## How to Install

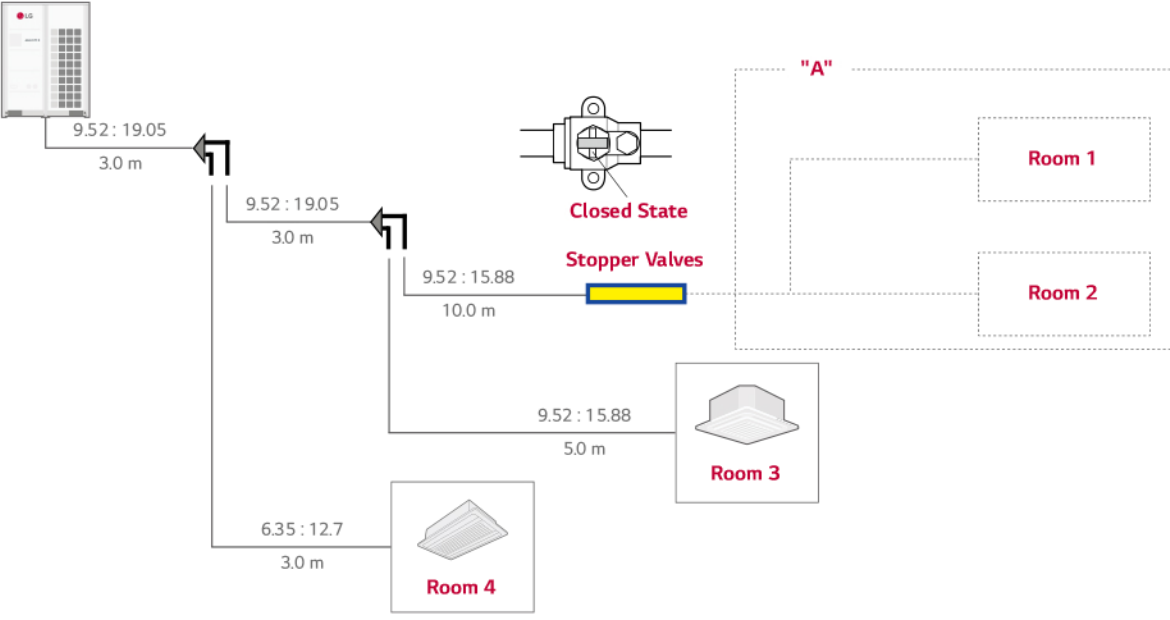


1. Cut the inlet side of the connector, and weld the pipe
2. If installing additional indoor units, the outlet side connector should be cut according to installation pipe.
3. When installing a stopper valve, the flare part should be facing towards additional indoor unit.
4. When installing an additional indoor unit, the SVC valve should be in closed state.

※ When welding, service valve should be wrapped by wet cloth.

## Application

(Room 3 & 4 : in use / Room 1 & 2 : need to install indoor units)



- In case of installation of additional indoor unit, refrigerant of used indoor unit must be discharged. (Room 3 & Room 4)
- If stopper valve is already installed, you can install additional indoor unit without refrigerant loss from the entire system.
- After installation of additional indoor unit, you just need refrigerant charging for "A" section.
- Then, open the Stopper Valve.

